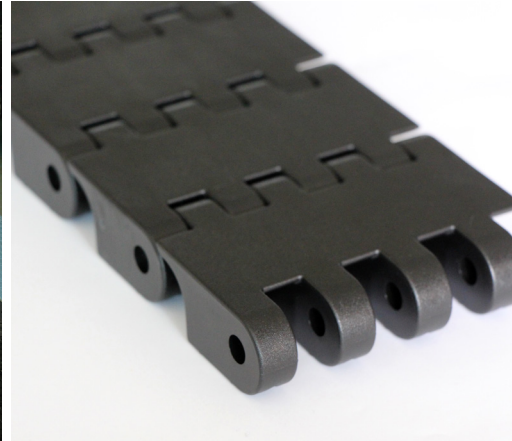


# uni CSB C K400

The Next Generation Plastic Chain for skid Conveying



Expert in the automotive industry  
Ammeraal Beltech is globally  
recognized as the leading company  
for plastic modular belt conveying  
solutions in the automotive  
industry.

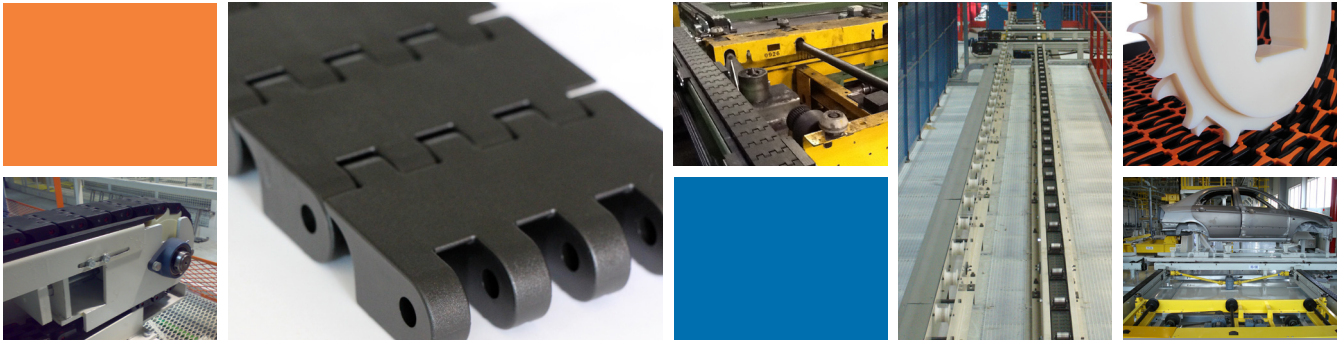
### **Extensive experience in skid conveying**

For over a decade, our plastic modular uni XLB chain has been consistently replacing more and more steel chain or rubber belting applications. The reason? Proven benefits and lower total cost of ownership. Now these same advantages are available in the new generation uni CSB C K400 chain.

### **uni CSB chain benefits**

Lower total cost of ownership by:

- Less downtime & maintenance
- Lower spare part demand
- Reduced construction heights
- Long lifetime expectation
- High load capacity
- Low energy consumption



## The new uni CSB C K400 chain

### Economic solution

The uni CSB C K400 at 102 mm width is an economic solution for chain conveyors. The 2" pitch feature enables lower construction heights.

### Innovative engineering delivering application flexibility

uni CSB C K400 can be used in:

- Longitudinal skid conveyors
- Cross transfer skid conveyors
- Buffer chain conveying when used in combination with our patented trolley connection (which doesn't need mechanical fastening in the chain)

### uni CSB C K400 chain characteristics

#### Chain:

- 2" pitch chain with stainless steel, PA or PBT pins
- 24 mm thickness with off-center pin position
- 10 000 N tensile strength
- Rubber top and wear resistant inserts available

#### Materials:

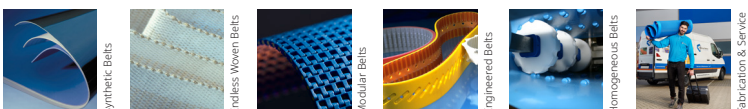
- Available in both POM NL and in certified flame retardant 'B1' rated POX FR(EC) material

#### Sprocket:

- Proven hinge-driven sprocket technology
- Ultra strong two row – bidirectional sprockets

local stock  
quick belt replacement  
short delivery time  
24/7 service

**ONE STOP**  
**SHOP**  
belt



**Expert advice and quality solutions for all your belting needs.**  
ammeraalbeltech.com

**Ammeraal Beltech**  
P.O. Box 38  
1700 AA Heerhugowaard  
The Netherlands

T +31 (0)72 575 1212  
info@ammeraalbeltech.com

ammera.com

This information is subject to alteration due to continuous development. Ammeraal Beltech will not be held liable for the incorrect use of the above stated information. This information replaces previous information. All activities performed and services rendered by Ammeraal Beltech are subject to general terms and conditions of sale and delivery, as applied by its operating companies.